









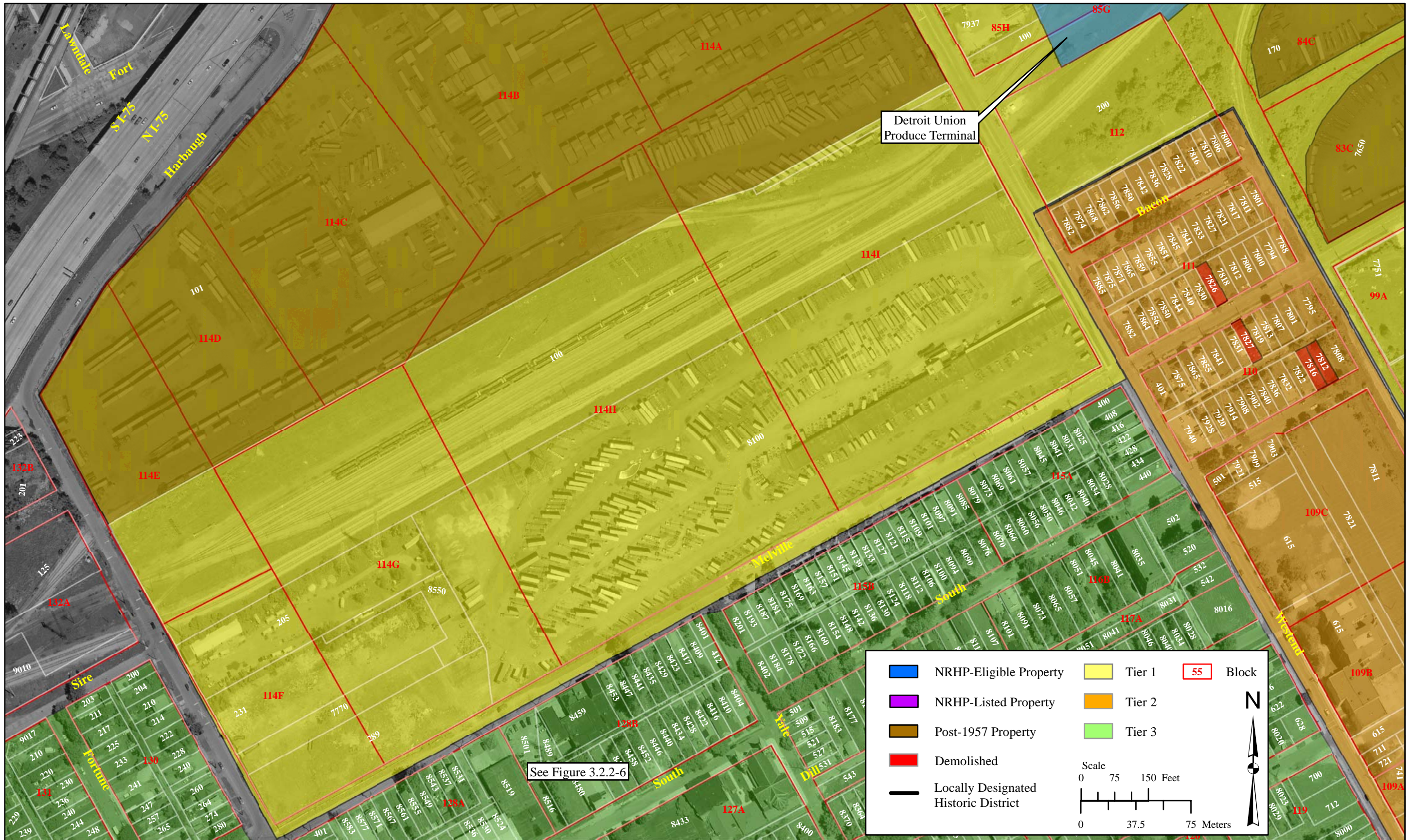


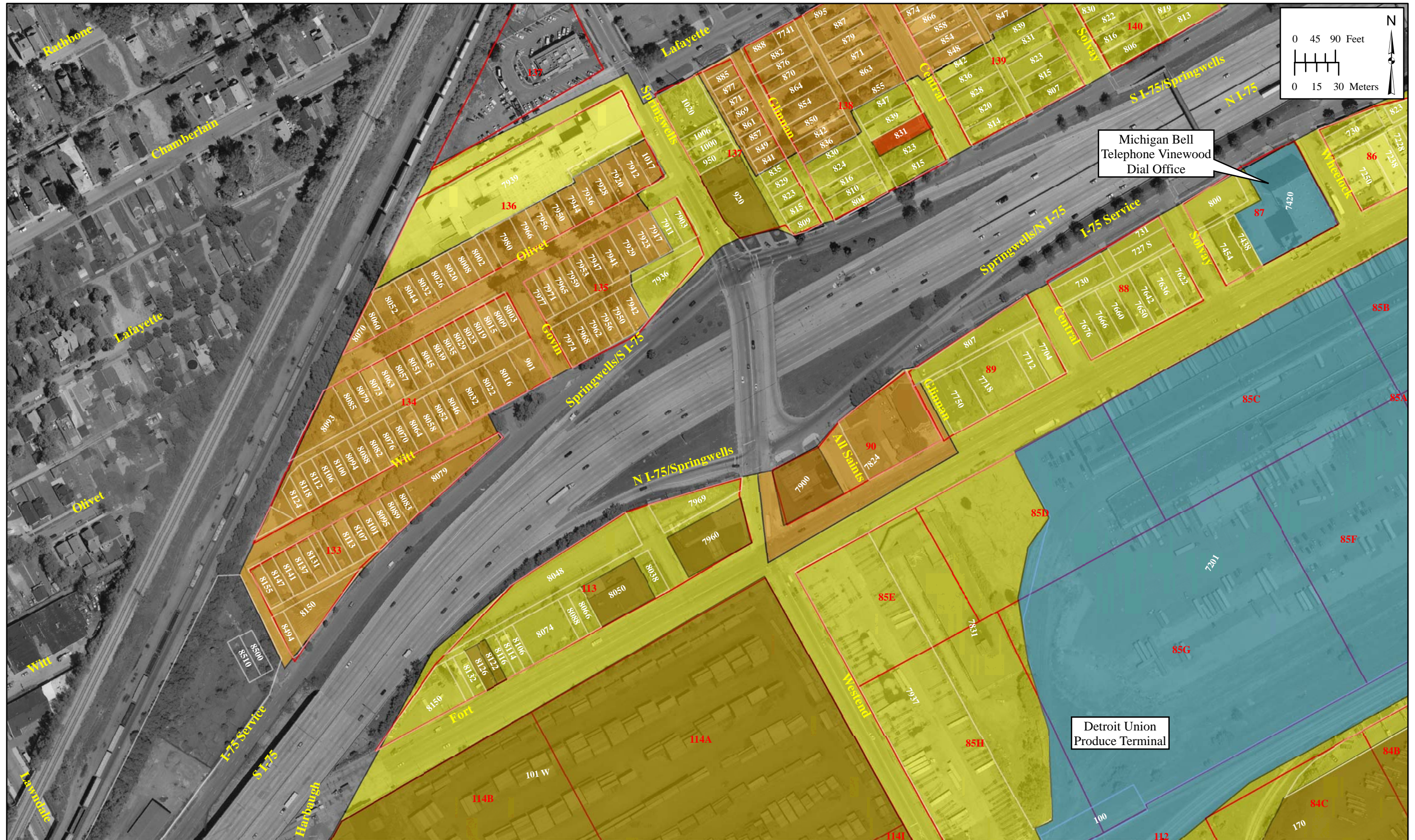
## APPENDIX B

### AERIAL PHOTOGRAPHS

	NRHP-Eligible Property		Tier 1
	NRHP-Listed Property		Tier 2
	Post-1957 Property		Tier 3
	Demolished		Block
	Locally Designated Historic District		
	Proposed Historic District		



Appendix B: Aerial 1 of 17. Above-Ground Resources Located within the Area of Potential Effects



Appendix B: Aerial 2 of 17. Above-Ground Resources Located within the Area of Potential Effects



Appendix B: Aerial 3 of 17. Above-Ground Resources Located within the Area of Potential Effects



Appendix B: Aerial 4 of 17. Above-Ground Resources Located within the Area of Potential Effects



Appendix B: Aerial 5 of 17. Above-Ground Resources Located within the Area of Potential Effects



Appendix B: Aerial 6 of 17. Above-Ground Resources Located within the Area of Potential Effects

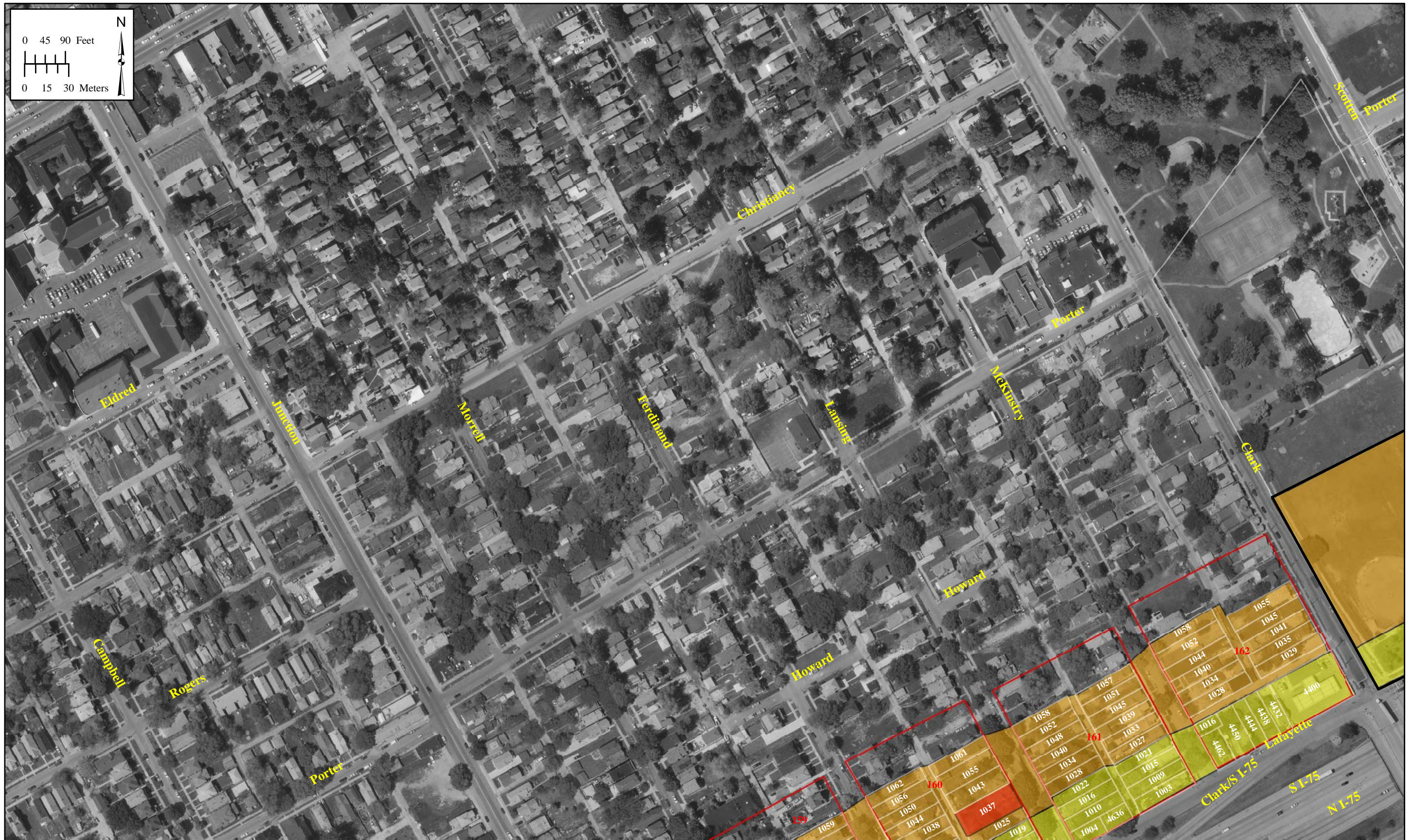


Appendix B: Aerial 7 of 17. Above-Ground Resources Located within the Area of Potential Effects





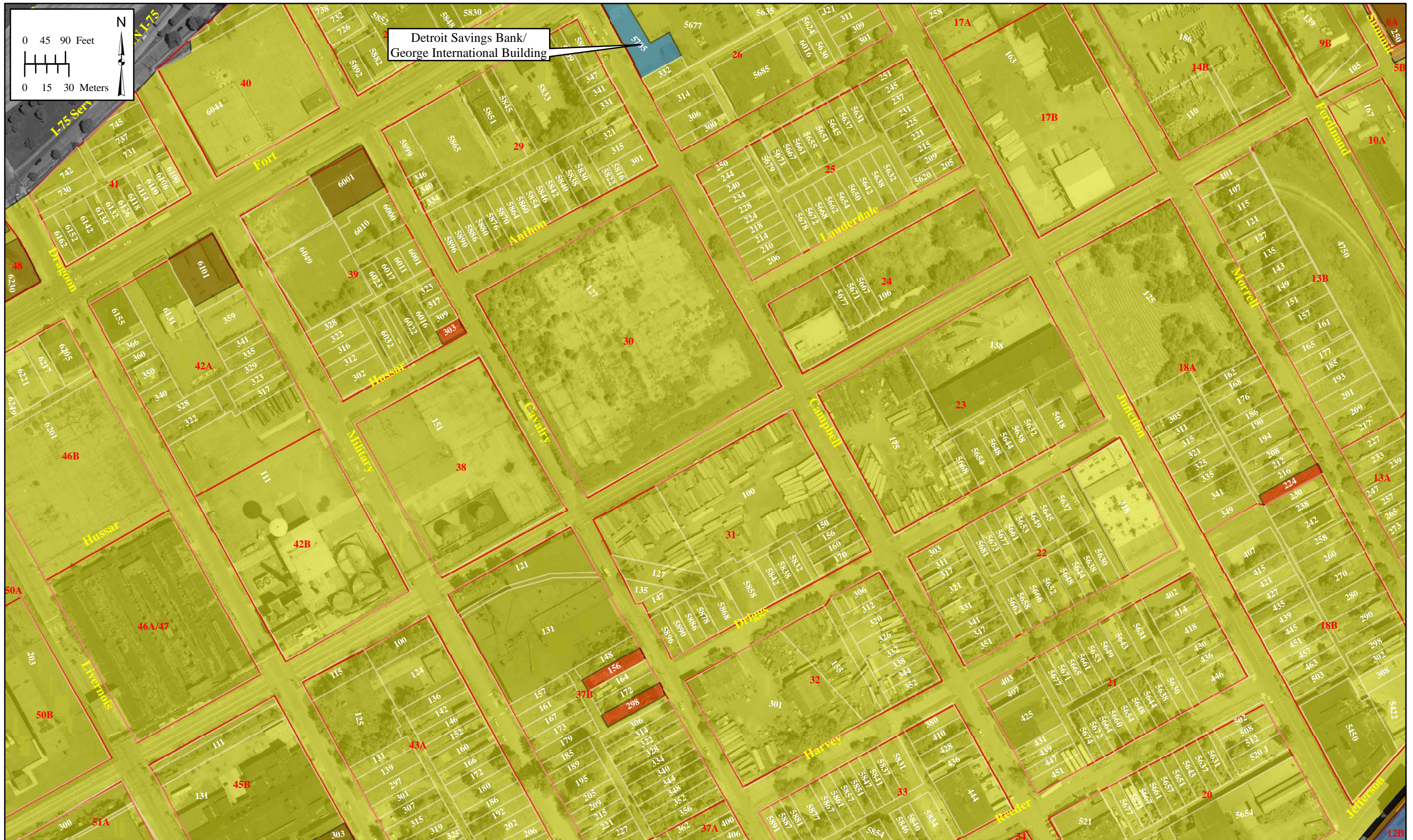
Appendix B: Aerial 8 of 17. Above-Ground Resources Located within the Area of Potential Effects



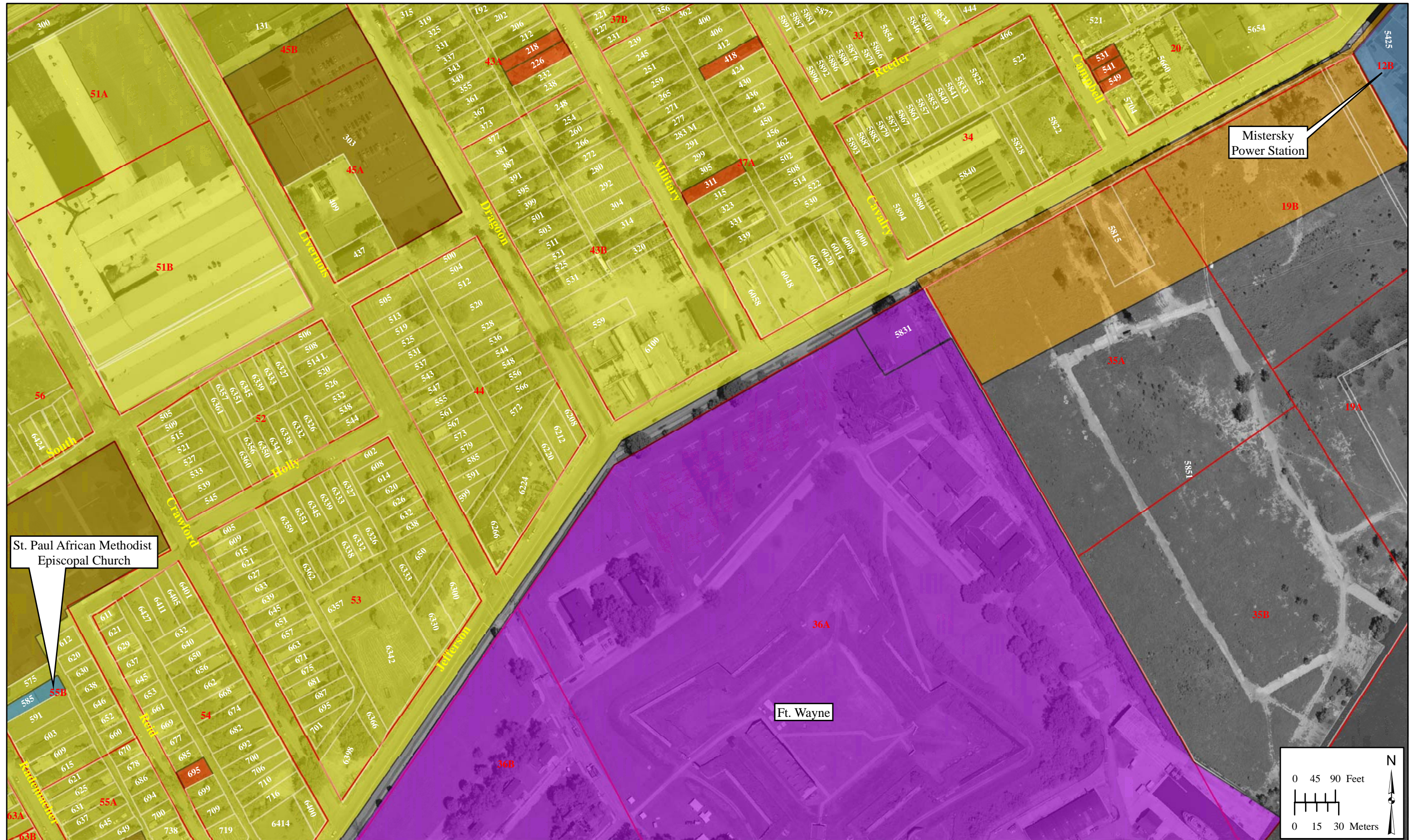
Appendix B: Aerial 9 of 17. Above-Ground Resources Located within the Area of Potential Effects



Appendix B: Aerial 10 of 17. Above-Ground Resources Located within the Area of Potential Effects



Appendix B: Aerial 11 of 17. Above-Ground Resources Located within the Area of Potential Effects



Appendix B: Aerial 12 of 17. Above-Ground Resources Located within the Area of Potential Effects



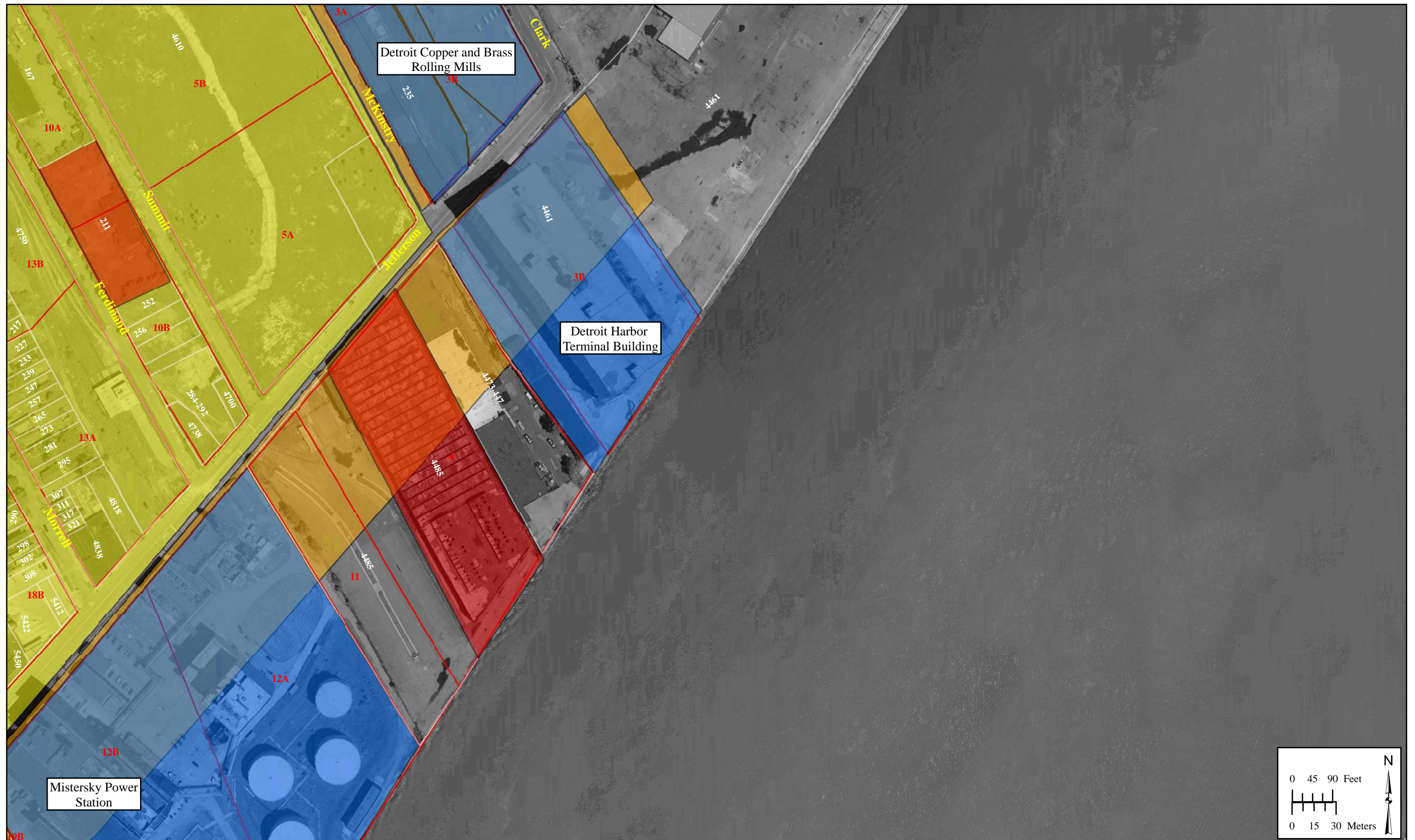
Appendix B: Aerial 13 of 17. Above-Ground Resources Located within the Area of Potential Effects



Appendix B: Aerial 14 of 17. Above-Ground Resources Located within the Area of Potential Effects

















Appendix B: Aerial 16 of 17. Above-Ground Resources Located within the Area of Potential Effects



Appendix B: Aerial 17 of 17. Above-Ground Resources Located within the Area of Potential Effects

## APPENDIX B

### AERIAL PHOTOGRAPHS

	NRHP-Eligible Property		Tier 1
	NRHP-Listed Property		Tier 2
	Post-1957 Property		Tier 3
	Demolished		Block
	Locally Designated Historic District		
	Proposed Historic District		

**APPENDIX C**

**RECOMMENDED NATIONAL REGISTER OF HISTORIC PLACES RESOURCES  
IMAGES**



Facade and North Elevation



North Elevation



Sign



Façade and West Elevation



Façade and East Elevation



Façade, Detail

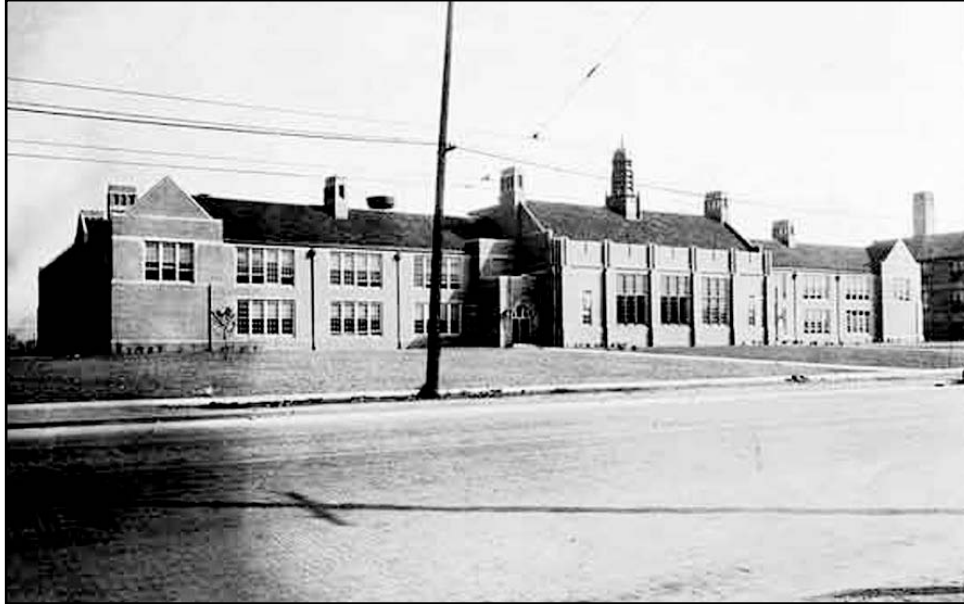




Façade and East Elevation



Façade



Historic Photograph (date unknown)



2007

C-5. Southwestern High School, 6921 West Fort Street



South and East Elevations



South Elevation

C-6. Olivet Presbyterian/Old Landmark Church of God in Christ, 6908 West Fort Street



North and East Elevations



C-7. Detroit Savings Bank/George International Building,  
5705 West Fort Street



North and West Elevations



Inner Court/Patio

C-8. Berwalt Manor Apartment Building, 760 Campbell Street



C-9. Roberts Brass Manufacturing Company Building, 5436 West Fort Street



Streetscape along West Lafayette Boulevard, View Northeast



Breezeway Addition between Church and Parsonage





Façade and North Elevation



Façade

C-11. St. Paul AME Church, 579 South Rademacher Street



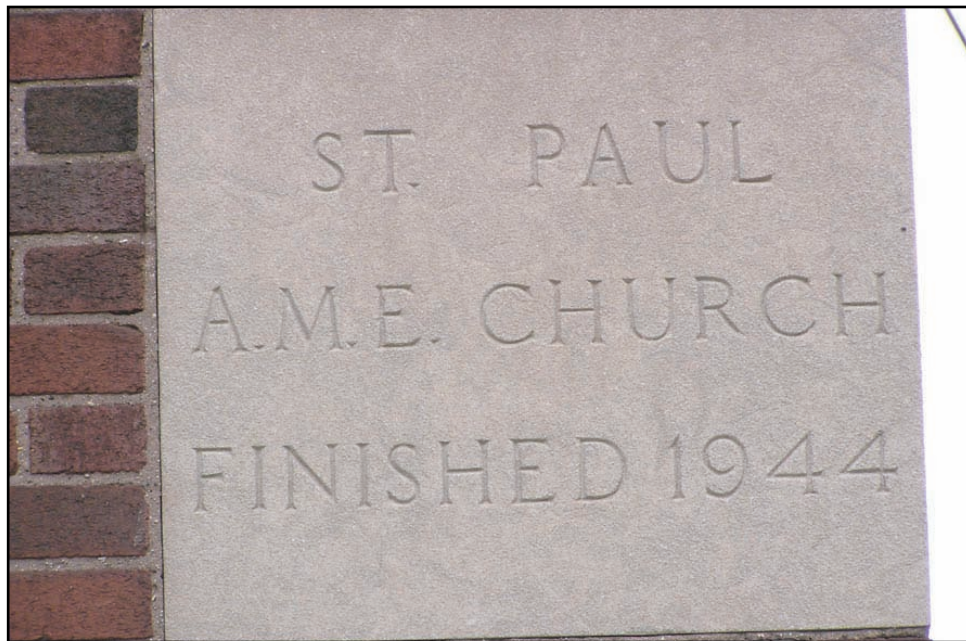
Façade and South Elevation



Window, Detail



First Cornerstone



Second Cornerstone



Streetscape of Building From West Jefferson Avenue, View Northwest



Detail View of Queen Anne-Inspired Side Entry Porch



C-13. Motz's Burgers



Office Building, East Elevation



Monitor-Roof Building, East Elevation



C-14. Detroit Copper and Brass Rolling Mills Complex, 174 South Clark Street



Streetscape of Plant from West Jefferson Avenue



View of Plant from Detroit River





Plant Entrance



Façade and West Elevation



North (Rear) Elevation

C-16. Detroit Fire Department Engine Company No. 29, 7600 West Jefferson Avenue